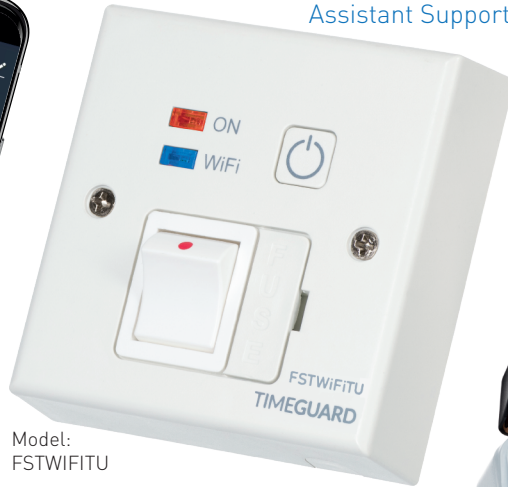
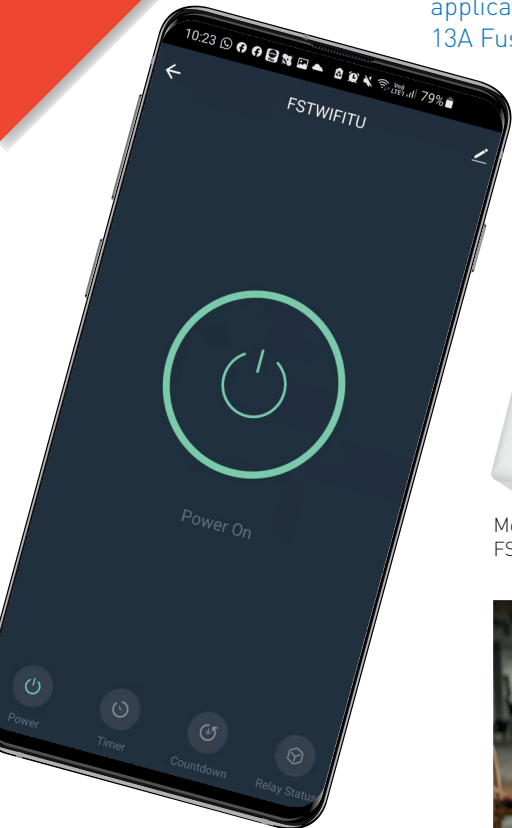


**What's NEW**

# Experts in Remote Control

with Timeguard's ENHANCED range of Wi-Fi Controlled Smart Home Products

Wi-Fi enabled control for all manner of electrical applications connected to Timeguard's FSTWIFITU 13A Fused Spur Timeswitch. Now with TuyaSmart, Amazon Alexa & Google Assistant Support!



Ideal for switching lighting, heating and outdoor applications, with the Weathersafe IP66 fused spur FSTWIFITUGV offers a host of great features and benefits. The start, the new Tuya chip now allows enhanced control from your mobile or tablet device no matter where you are. Also, new features include linkable smart automation with other TuyaSmart products, grouping devices together & setting triggers based on weather, time, temperature or other devices current state off operation. Yes, simply use your TuyaSmart account to get the most efficient and productive use from your smart home!

**Smart Automation When & Where You Need it!**



## Lights, Camera, Action!

A brand new addition to Timeguard's extensive & ever growing range of products is the LEDPROCAM. A Wi-Fi Camera + PIR system that extends the already well known and market leading LEDPRO range of lighting products. Using Timeguard's unique and effortless plug in terminal connection, your existing LEDPRO floodlight will transform into a Wi-Fi ready smart home device that can be controlled from anywhere via a mobile or tablet that supports a Wi-Fi access point or a mobile data connection. The features of the LEDPROCAM include a 270° PIR with sensitivity adjustment and x3 90° areas which can be switched ON/OFF for a more customized and tailored approach to your installation area.



A full HD 1080p camera for a sharp picture in all weather variations, 2 way communication, siren alarm to deter unwanted visitors, motion detection, time schedules over a 24 hour or 7 day period, automatic night vision & live playback from the cloud or local SD card (not supplied).

**Easy Access Remote Viewing Via The Tuya Smart App!**

Model: LEDPROCAM With LEDPRO Floodlight



### Product Features



Output & Wi-Fi LED status indicators.



Manual override & pairing button.



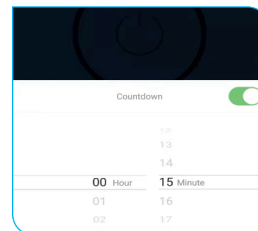
Multiple users & device support in a single App.



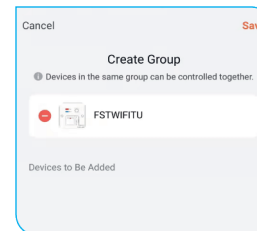
Weathersafe IP66 version available: FSTWIFITUGV.



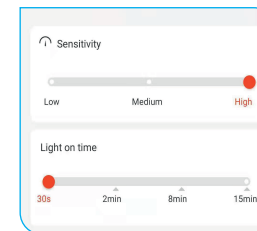
Powered by Tuya smart chip technology



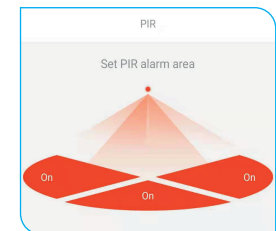
NEW fully adjustable countdown feature from an on or off status!



Group multiple devices together for simultaneous switching!



LEDPROCAM Interface: PIR & lighting adjustments



LEDPROCAM Interface: Switchable 90° PIR Sections