

Switched ON!

THE OFFICIAL **TIMEGUARD** NEWSLETTER

**BUMPER
ISSUE**

**Stay in
control,
wherever
you are.**



Pages 2-3

KEEP CONNECTED

With our Wi-Fi controlled
Smart Switches and Timers



Pages 6-7

THE BOSS OF BOOST

The heat is on with our new
Digital Boost Timers



Pages 8-9

PUTTING SAFETY FIRST

With Valiance+ RCD's and
Dual Flag Technology

LIGHTING THE WAY

With new GU10 compatible
PIR up/down lights



Pages 14-15

ALSO INSIDE THIS ISSUE...

Weathersafe Outdoor power | Powerseal Boxes

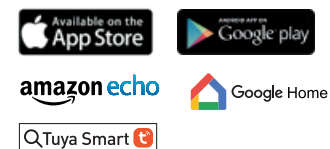
Remote control

What's NEW

Access your heating, lighting and more from your smartphone, wherever you are.

Adjust or switch your appliances on or off, whatever your location, with our range of household and commercial Wi-Fi products, all controllable through the Tuya Smart mobile app.

Available with a Wi-Fi or data connection, you can also set up a weekly time schedule through the app. Also compatible with Alexa and Google Assistant. Android and iOS only.



WFLH

WFLH

Wi-Fi Smart Lamp Holder Adapter

- Wi-Fi Smart Lamp Holder Adapter – Enables users to remotely control lamps via the Tuya Smart mobile app.
- APP Remote Control – Turn ON/OFF lighting anywhere your phone has Wi-Fi or Data Connection.
- Voice Control – Works with Amazon Alexa Echo and Google Assistant.



WFIC

WFIC

Wi-Fi Smart Indoor Camera

- APP Remote Control.
- Motion Detection with notification alerts.
- Two-way audio using built-in Mic and Speaker.
- Available for Android and iOS only.
- Automatically switches to Night Vision when lighting is dim.



WFDC

WFDC

Wi-Fi Smart Plug-in Chime

- For use with the Timeguard WFDBC Smart Camera Doorbell (sold separately).
- Up to 6 x WFDC Smart Plug-in chimes can be used with the WFDBC Smart Camera Doorbell (sold separately).
- 52 Selectable Ring Tones.



WF10COM

WF10COM

Wi-Fi 10A In-Line Connector

- Enables users to remotely control all connected appliances via the Tuya Smart mobile app.
- Turn ON/OFF lighting or other appliances anywhere your phone has Wi-Fi or Data Connection.
- Programmable ON/OFF weekly timing schedule via app.



WFADAPM

WFADAPM

Wi-Fi Smart Plug-in Timer

- Enables users to remotely control plug-in devices via the Tuya Smart mobile app.
- Turn ON/OFF lighting or other plug-in devices anywhere your phone has Wi-Fi or Data Connection.
- Programmable ON/OFF weekly timing schedule via app.



WFTWSUB

WFTWSUB

Wi-Fi 2 Gang Wall Socket

- Enables users to remotely control plug-in devices via the Tuya Smart mobile app.
- 2 AC Power Outlets – Independently controllable via app.
- Voice Control – Works with Amazon Alexa Echo and Google Assistant.



WFTRS3GUSB

WFTRS3GUSB

Wi-Fi 3 Way Power Strip with USB Ports

- Wi-Fi Power Strip – Enables users to remotely control plug-in devices via the Tuya Smart mobile app.
- Voice Control – Works with Amazon Alexa Echo and Google Assistant.
- Available for Android and iOS only.
- Programmable ON/OFF weekly timing schedule via app.



WFAD3

WFAD3

Wi-Fi 13A 3 Way + 2 x USB Adaptor

- Works with Wi-Fi and mobile data.
- Supports multiple devices.
- Programs 24 hour or 7 day options.
- Manual override.
- Countdown function.



WFDBC

WFDBC

Wi-Fi Smart Camera Doorbell & Chime.

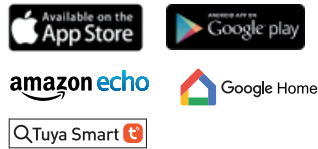
- APP Control – You'll get a notification when movement is detected or when visitors press the Doorbell via the Tuya Smart mobile app.
- Live View – Monitors your home in 1280x720P HD video with infrared night vision.
- Automatically switches to Night Vision when lighting is dim.
- Available for Android and iOS only.

Bright idea

Control your lighting, whatever your location, with a Wi-Fi or data connection.

LED lamps controllable through the Tuya Smart mobile app, wherever you are with a Wi-Fi or data connection, also by voice control via the Alexa Echo or Google Home Assistant.

Available for Android and iOS, no home hub required. Warm white and Cool light available, with up to 25,000 hours of lamp life.



- Voice control – works with Amazon Alexa Echo and Google Home Assistant.
- App remote control – Turn ON/OFF anywhere on your mobile device with Wi-Fi or data connection.
- Available for Android and iOS.
- No home hub required.
- RGB colour control.
- Warm white and Cool white.
- 10%-100% dimmable.
- 220-240V AC 50Hz.
- Up to 25,000 hours of lamp life.



WFLE27

WFLE27

Wi-Fi E27/ES 10W RGBW 806lm LED GLS Lamp



WFLE27C

WFLE27C

Wi-Fi E27/ES 5.5W RGBW 400lm LED Candle Lamp



WFLE14C

WFLE14C

Wi-Fi E14/SES 5.5W RGBW 400lm LED Candle Lamp



WFLE14GB

WFLE14GB

Wi-Fi E14/ES 5.5W RGBW 400lm LED Golf Ball Lamp



WFLB22

WFLB22

Wi-Fi B22/BC 10W RGBW 806lm LED GLS Lamp



WFLB22

WFLB22

Wi-Fi GU10 5.5W RGBW 400lm LED GU10 Lamp

NTTWIFI

Wi-Fi Controlled 16A 7 Day Timeswitch

- Supports multiple users/devices.
- Enables user to programme, change and check appliance status wherever they are.
- Ideal for Immersion Heater control and Lighting applications.



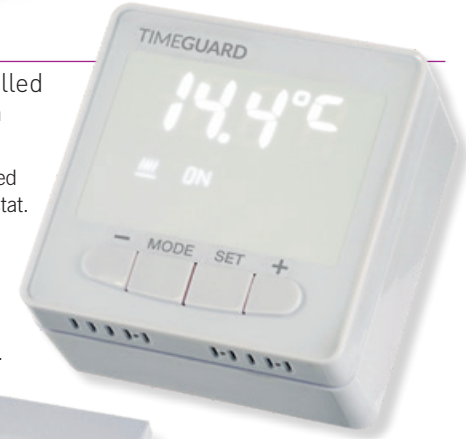
Anti-Tamper with optional lockable transparent cover.



TRTWIFI

Wi-Fi Controlled Digital Room Thermostat

- Wi-Fi controlled room thermostat.
- Available for Android and iOS only.
- Works with Wi-Fi and 4G.



FSTWIFI

Wi-Fi Controlled Fused Spur Timeswitch

- Wi-Fi enabled/controlled electronic fused spur timer.
- Works with Wi-Fi and 4G.
- Can reduce running costs if unwanted programmes are cancelled.



FSTWIFITGV

Wi-Fi Controlled IP66 Fused Spur

- Wi-Fi enabled/controlled electronic fused spur timer.
- Complete remote control of your appliance.
- 13 amp fuse.
- Two pole isolating switch.



for full details on these products please visit www.timeguard.com

A timely boost

Activate your Timeswitches and electronic boost timers with the simple touch of a button.

Timeguard's range of Fused Spur Timeswitches and electronic boost timers use simple push button programming and boost facilities, making them effortless to use. Ideal for immersion heaters, room heaters, towel rails and lighting.

BoostMaster

- Large digital countdown/boost timer display with backlight display.
- Boost up in 15 minute incremental settings and countdown minute by minute.
- Switch rating 13A (3kW).
- Fits into a 25mm back box.
- Backlight disabling facility.



ES ENERGY SAVING TIMEGUARD



TGBD4
4 Hour Digital Boost Timer with Countdown Display



TGBD2
2 Hour Digital Boost Timer with Countdown Display



TGBT4N

Up to 4 Hour Electronic Boost Timer

- Automatic timer countdown selection for up to 4 hours – 13A (3kW) loading.
- Typical applications such as immersion heaters, room heaters, towel rails and lighting.
- Fits a standard flush or surface mount BS wall box min. 25mm deep.



FBT4N

Up to 4 Hour Electronic Boost Timer and Fused Spur

- Automatic timer countdown selection for up to 4 hours – 13A (3kW) loading.
- Typical applications such as immersion heaters, room heaters, towel rails and lighting.
- Replaces existing single gang connection unit or fixed appliance outlets. Box min. 25mm deep.

The range of Fused Spur Timeswitches incorporating simple push button programming and boost facilities and all the tried and trusted features you expect from Timeguard products.

FST24

24 Hour Fused Spur Timeswitch

- Up to 4 ON and OFF programmes per day.
- Optional 1 or 2 hour boost facility.
- Automatic Summer/Winter time changeover.



FST77

7 Day Fused Spur Timeswitch

- Up to 4 ON and OFF programmes available (5 day plus 2 or 7 day programming).
- Optional 1 or 2 hour boost facility.
- Automatic Summer/Winter time changeover.



Always a safe choice

Type A

Count on extra protection against the risks of electrocution with Dual Flag Type A Class Technology.



Timeguard's Dual Flag Type A Class RCD Technology, designed and built to the latest BS7288:2016 standard, clearly indicates the status of the RCD, giving added protection to both the installer and the end user.



Active BLUE BUTTON **Passive GREY BUTTON**



RCD01WAVN

Valiance+® RCD Single Gang White Switched Socket – Active

- Single gang protected switched socket outlet for convenience and extra safety.
- Manual reset and test button for safety checks.
- RCD Class A rated.
- Extra fast action – trips out within 40 milliseconds (BS7288).



RCD02WPVN

Valiance+® RCD Single Gang White Switched Socket – Passive

- Provides additional protection against the dangers of electrocution.
- Eliminates the need for plug-in residual current circuit breakers.
- RCD Class A rated.
- Extra fast action – trips out within 40 milliseconds (BS7288).



RCD03MAVN

Valiance+® RCD Single Gang Metal Switched Socket – Active

- New Dual Flag Technology provides added protection against the risks of electrocution.
- High EMC Immunity dramatically reduces nuisance tripping.
- Continues to protect with Lost Neutral/pulsating DC earth fault.
- RCD Class A rated.

RCD04MPVN

Valiance+® RCD Single Gang Metal Switched Socket – Passive

- New Dual Flag Technology provides added protection against the risks of electrocution.
- High EMC Immunity dramatically reduces nuisance tripping.
- Continues to protect with Lost Neutral/pulsating DC earth fault.
- RCD Class A rated.



RCD06WPNV

Valiance+® RCD Double Gang White Switched Socket – Passive

- Manual reset and test button for safety checks.
- Extra fast action – trips out within 40 milliseconds (BS7288).
- Trips out when the power supply is temporarily lost. A safety must for machine tool applications.
- RCD Class A rated.



RCD05WAVN

Valiance+® RCD Double Gang White Switched Socket – Active

- New Dual Flag Technology provides added protection against the risks of electrocution.
- High EMC Immunity dramatically reduces nuisance tripping.
- Continues to protect with Lost Neutral/pulsating DC earth fault.
- RCD Class A rated.



RCD07MAVN

Valiance+® RCD Double Gang Metal Switched Socket – Active

- Supplied with a 40mm BS metal surface wall box.
- Manual reset and test button for safety checks.
- Extra fast action – trips out within 40 milliseconds (BS7288).
- RCD Class A rated.



RCD08MPVN

Valiance+® RCD Double Gang Metal Switched Socket – Passive

- Eliminates the need for plug-in residual current circuit breakers.
- Protects appliances from possible fire hazard.
- Extra fast action – trips out within 40 milliseconds (BS7288).
- RCD Class A rated.



RCD10WPNV

Valiance+® RCD White Fused Connection Unit – Passive

- New Dual Flag Technology provides added protection against the risks of electrocution.
- Valiance+ range available in Active and Passive versions across the range.
- High EMC Immunity dramatically reduces nuisance tripping.
- RCD Class A rated.



RCD11WPNV

Valiance+® RCD White Fused Connection Unit – Passive

- New Dual Flag Technology provides added protection against the risks of electrocution.
- High EMC Immunity dramatically reduces nuisance tripping.
- Continues to protect with Lost Neutral/pulsating DC earth fault.
- RCD Class A rated.



RCD16MLN

Valiance+® RCD Metal Fused Connection Unit – Passive

- New Dual Flag Technology provides added protection against the risks of electrocution.
- High EMC Immunity dramatically reduces nuisance tripping.
- Continues to protect with Lost Neutral/pulsating DC earth fault.
- RCD Class A rated.



Whatever the weather...

Our range of IP66 outdoor Weathersafe sockets, spurs and switches are ideal whatever the weather.

Offering IP66 protection, our Weathersafe Vision and Extreme range of products effectively guard against dust and rain, splashing water, hose-directed water and ice formations, and provide the safest way to take and use power outside.



Weathersafe
VISION 



TGV101N
Weathersafe Vision
Single Gang
13A Switched Socket



TGV103N
Weathersafe Vision
Single Gang 13A
Fused Spur



TGV104NP
Weathersafe Vision
Single Gang 13A RCD
Fused Spur



TGV201N
Weathersafe Vision
Twin Gang 13A
Switched Socket

Passive
GREY
BUTTON



TGV204NP
Weathersafe Vision Twin
Gang 13A Switched RCD
Socket - Passive

Passive
GREY
BUTTON



TGV205NP
Weathersafe Vision Twin
Gang 13A Switched RCD
Socket - Active

Active
BLUE
BUTTON



FSTWIFITGV

Wi-Fi Controlled
IP66 Fused Spur



LEDs
UP TO
500W

Weathersafe
Extreme 

ES ENERGY SAVING
TIMEGUARD



WXT101N
Weathersafe Extreme
Single Gang
13A Switched Socket



WXT103N
Weathersafe Extreme
Single Gang
13A Fused Spur



WXT104NP
Weathersafe Extreme
Single Gang
13A RCD Fused Spur



WXT201N
Weathersafe Extreme
Twin Gang
13A Switched Socket



WXT204NP
Weathersafe Extreme
Twin Gang 13A Switched
RCD Socket - Passive

Passive
GREY
BUTTON



WXT205NP
Weathersafe Extreme
Twin Gang 13A Switched
RCD Socket - Active

Active
BLUE
BUTTON



WP401
Outdoor Multi-
Connector Box

ES



WPM02
Outdoor Power
Connect-2 Mini Box

ES

TGVL01

Weathersafe Single Gang 2-Way Switch (SP)

- 10AX (fluorescent rated).
- Backlit neon illuminates switch for dark areas.
- Complies with BSEN60669.
- Multiple 20mm knock outs.
- IP66 weatherproof rating.
- 10AX (fluorescent rated).



WEATHERSAFE
IP66
RATING

TGVL03

Weathersafe Single Gang Bell Push Switch (SP)

- 20AX (fluorescent rated).

TGVL02

Weathersafe Twin Gang 2-Way Switch (SP)

- 10AX (fluorescent rated).
- Backlit neon illuminates switch for dark areas.
- Complies with BSEN60669.
- Multiple 20mm knock outs.
- IP66 weatherproof rating.
- 10AX (fluorescent rated).



WEATHERSAFE
IP66
RATING

TGVL05

Weathersafe Twin Gang Bell Push Switch (SP)

- 20AX (fluorescent rated).

The power's in your hands...

Our outdoor weatherproof Powerseal sockets and switches are the perfect choice, come rain or shine.



The Powerseal TPS range of weatherproof outdoor sockets is ideal for most outdoor power needs, whether for deck areas, power tools, electric barbecues, lawnmowers or strimmers.



ENERGY SAVING
TIMEGUARD



POWERSEAL
IP55
RATING
-SOCKETS-
When Lid Closed

TPS101

Outdoor Single Gang Socket

- 13 amp single gang socket.
- 5x 20mm knock-out cable entries (bottom entry supplied with cut to size grommet).
- 2x earth terminals in back box.
- Complies with BS1363.
- IP55 weatherproof rating (when lid closed).
- Impact resistant housing.
- Spring back socket lid cover.
- Suitable for all BS 13 amp plugs.



POWERSEAL
IP55
RATING
-SOCKETS-
When Lid Closed

TPS201

Outdoor Twin Gang Socket

- 13 amp twin gang socket.
- 8x 20mm knock-out cable entries (bottom 2 entries supplied with cut to size grommet).
- 2x earth terminals in back box.
- Complies with BS1363.
- IP55 weatherproof rating (when lid closed).
- Impact resistant housing.
- Spring back socket lid covers.
- Suitable for all BS 13 amp plugs.



POWERSEAL
IP55
RATING
-SOCKETS-
When Lid Closed



TPS401

Multi-Box with 4-Gang Socket Strip and Hinged Lid

- Hinged lid for quick and easy access outdoor power.
- Suitable for 13 amp plugs and selective timers.
- Spacious design allowing for transformer storage.
- Allows up to 4x appliance outlets.
- 5x cable seal outlets.
- 4 way socket strip included (cable and plug not supplied).
- Tough and durable reinforced plastic lid and housing.
- Lockable cover facility.
- Ideal for transformer-linked garden lighting and other outdoor appliances.



TPS202

Multi-Box with 2-Gang Socket Strip and Hinged Lid

- Quick and easy install.
- Lockable hinged lid.
- 2-gang trailing socket included.



TPSL01

Outdoor Single Gang Switch

- 10AX (fluorescent rated) single gang SP 2-way.
- 5x 20mm cable entries (bottom entry supplied with cut-to-size grommet).
- 2x earth terminals in back box.
- Complies with EN60669.
- IP55 weatherproof rating (when lid closed).
- Impact resistant housing.

TPSL02

Outdoor Twin Gang Switch

- 10AX (fluorescent rated) twin gang SP 2-way (common live).

TPSL03

Outdoor Single Gang Bell Push

- 10AX (fluorescent rated) single gang SP 1-way.
- Push to make bell push.



TPSL01/TPSL03

A PIR-fect lighting solution

Indoor and outdoor lights designed to suit all requirements.

The Up/Down light range offers a powerful and energy-saving alternative to standard spotlights (when GU10 LED lamps are installed). The new PIR Up/Down lights are ideal for use indoors and out.



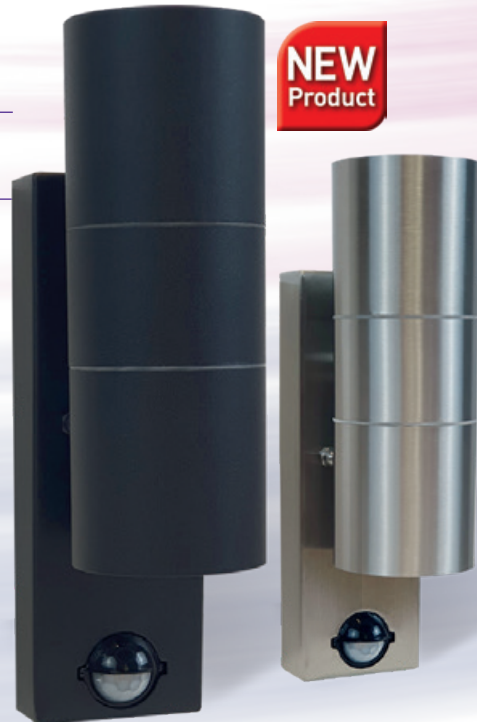
UDB2PIR

LED Ready PIR Up/Down Light (Black)

UDSS2PIR

LED Ready PIR Up/Down Light (Stainless Steel)

- Ideal for indoor and outdoor use.
- Class – Class I.
- IP rating – IP44.
- PIR sensor can be adjusted for brightness, sensitivity and illumination time.
- PIR detection range – Up to 8m when mounted at 2.4m high.
- PIR detection angle – 110°.
- Delay time – 10 seconds to 4 minutes.
- Adjustable 10-2000 LUX.
- PIR override.
- Operating temperature range -0°C to 40°C.
- Compatible with GU10 halogen and GU10 LED lamps.
- Max 2 x 35W Halogen or LED lamps.
- Compatible with the Timeguard WFLGU10 Wi-Fi GU10 5W RGB smart lamp.



UDSS1

LED Ready Fixed Single Spotlight – Stainless Steel

UDB1

Black Version

- A powerful and energy-saving alternative to standard spotlights (when GU10 LED lamps are installed).
- Fixed spotlight direction.
- Stylish design with IP65 weatherproof rating.
- High quality metal Luminaire with superior finish.
- Recommended bulb type: 35W Halogen GU10 or LED equivalent (lamp not supplied).
- Ideal for indoor and outdoor use.
- Temperature range -5°C to 55°C.
- Simple terminal block connection.



UDSS1

UDB2

LED Ready Up/Down Light – Black

UDSS2

Stainless Steel Version

- A powerful and energy-saving alternative to standard spotlights (when GU10 LED lamps are installed).
- Up and down light direction.
- Stylish design with IP65 weatherproof rating.
- High quality metal Luminaire with superior finish.
- Recommended bulb type: 35W Halogen GU10 or LED equivalent (lamp not supplied).
- Ideal for indoor and outdoor use.
- Temperature range -5°C to 55°C.
- Simple terminal block connection.



UDB2

UDSS3

LED Ready Adjustable Single Spotlight – Stainless Steel

UDB3

Black Version

- A powerful and energy-saving alternative to standard spotlights (when GU10 LED lamps are installed).
- Horizontal and vertical spotlight adjustment for maximum illumination.
- Stylish design with IP65 weatherproof rating.
- High quality metal Luminaire with superior finish.
- Recommended bulb type: 35W Halogen GU10 or LED equivalent (lamp not supplied).
- Ideal for indoor and outdoor use.
- Temperature range -5°C to 55°C.
- Simple terminal block connection.



UDSS3



Spot the Difference

Simply find and mark the five differences between the images. Send, fax or email us your entry clearly stating your name, address and email in capital letters and we will enter you in our prize draw. Three winners will each receive a £50 M&S card. Closing date is 31st August 2021.

Please tick the box if you are entering the competition only and **DO NOT** require literature updates.

PLEASE COMPLETE IN CLEAR CAPITAL LETTERS.

Name: _____

Address: _____

Post Code: _____

Tel: _____

Fax: _____

Email: _____

Fax NOW on 020 8450 0635

or scan and email back to CSC@timeguard.com



A **theben** Group Company

Victory Park, 400 Edgware Road, London NW2 6ND
Tel: 020 8452 1112 • Fax: 020 8450 0635

www.timeguard.com

Stay up to date

You can access our latest catalogue, newsletter and all of our product information and prices at any time of day or night at www.timeguard.com. Here you will also find our latest information, press releases and downloading facilities for product operating instructions. Log onto Timeguard online now for simple selection of the right products for your needs.

Or complete and return the form opposite by fax or post to receive the latest information on all Timeguard product ranges available.

www.timeguard.com

Under the General Data Protection Regulation (GDPR) we at Timeguard Ltd need to ensure that you are happy for us to continue communicating with you.

NO LONGER WANT TO RECEIVE INFORMATION FROM TIMEGUARD?

If you do not wish to continue receiving our Newsletter and other product information, please complete the information below. Either fax back or scan and email back to info@timeguard.com to confirm you wish to opt out of receiving further information.

Please tick this box if you no longer wish to receive any further information from Timeguard and request that all your details are erased from our records.

Name: _____

Address: _____

Post Code: _____

All information held by Timeguard Ltd is not passed on to any 3rd parties and is used solely by us to promote our products.

Please also visit our website www.timeguard.com for our Privacy Policy.

Fax NOW on 020 8450 0635

or scan and email back to info@timeguard.com