

5 012483 006603 >



## AUTOMATIC DUSK-TILL-DAWN NIGHT LIGHT

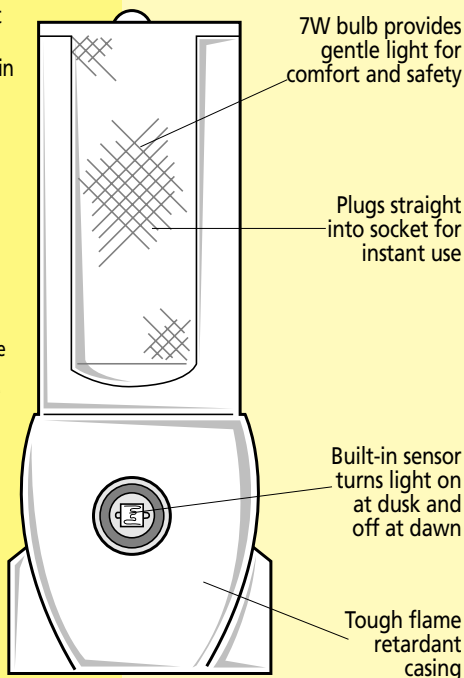
The Timeguard automatic dusk-till dawn Night light simply plugs straight into a 13A socket to provide instant soft and gentle light for comfort and safety in nurseries, young children's bedrooms, landings and hallways.

- Easy to operate - simply plug in
- Provides gentle light for comfort & safety
- Ideal for use in nurseries, young children's bedrooms, landings & hallways
- Built-in sensor prevents daytime operation

### Operating Instructions

- Plug the Night light into a 3-pin 13 amp socket. Switch the socket 'ON'.
- When you want to remove the Night light from the socket make sure the socket switch is 'OFF'. To replace the bulb remove the top screw from the rear of the Night light. Slide the cover upwards and outwards.
- Unscrew the bulb and replace with a 7W 220/240V AC SES base bulb (MM5241 or MM7189).
- Engage the tabs at the base of the cover into the Night light and swing back into place. Replace the top screw.

**Do not allow children to play with the Night light. Do not plug in if damaged or wet. Do not block ventilation or cover with drapes or blankets. For indoor use only. DO NOT FIT LARGER WATTAGE BULB THAN 7W. TO BE USED IN VERTICAL POSITION ONLY.**



THREE YEAR



GUARANTEE

Helpline

**020 8450 0515**

Call now for a free range brochure on

**020 8452 1112**

For further information contact: **Timeguard Ltd.**,  
Victory Park, 400 Edgware Road, London NW2 6ND  
Or visit our website [www.timeguard.com](http://www.timeguard.com)

### Specifications

Operating Voltage: 220 - 240V AC 50Hz  
Bulb Rating: 7W  
Conforms to Directives: 73/23/EEC  
89/336/EEC

Model EPNL5

